



The Signature of Quality

FEDERAL INDUSTRIES

A Standex Company

215 Federal Avenue
Belleville, Wisconsin 53508-9201

Phone: 800-356-4206

Fax: 608-424-3234

Email: Geninfo@Federalind.com

Website: Federalind.com

Project Name: _____

Item #: _____

Model #: _____ Qty: _____

Approval: _____

AIA #

SIS #

VISION SERIES - Square End Self-Serve Refrigerated Merchandiser - 78"

Designed with impulse sales in mind. Get maximum return from an attention-grabbing merchandiser and increase profits.



Model VRSS4878S

Shown With Options

OPTIONAL ACCESSORIES

- | | |
|---|--|
| <input type="checkbox"/> 3500K LED lights below shelves | <input type="checkbox"/> Solid right/left end panels (mirrored) |
| <input type="checkbox"/> White interior (including shelves) | <input type="checkbox"/> Reflective end glass |
| <input type="checkbox"/> Stainless steel interior (including shelves) | <input type="checkbox"/> Clear or reflective glass, sliding rear doors (Solid hinged on 36" cases) |
| <input type="checkbox"/> Stainless steel shelves in lieu of black | <input type="checkbox"/> Front cart bumper |
| <input type="checkbox"/> Stainless steel exterior finish | <input type="checkbox"/> 2 1/2" or 4" (101.6mm) casters (self-contained models only) (Weight limits may apply) |
| <input type="checkbox"/> Deli meat pegs | <input type="checkbox"/> Recessed casters |
| <input type="checkbox"/> Additional lighted 3500K LED shelf | <input type="checkbox"/> 6" legs (152mm) |
| <input type="checkbox"/> Condensate evaporator assembly (field install) (separate 120V, 20A circuit required) (remote only) | <input type="checkbox"/> Seismic legs |
| <input type="checkbox"/> Remote refrigeration with condensate pump (EEV included) | <input type="checkbox"/> Skirt w/4" casters or legs |
| <input type="checkbox"/> Self-cleaning condenser | <input type="checkbox"/> Joining kit for continuous line-ups |
| <input type="checkbox"/> Rear air intake and discharge | <input type="checkbox"/> Front wire display basket |
| <input type="checkbox"/> Premium exterior laminate | <input type="checkbox"/> Roll-Down locking security cover (square end profile only) |
| <input type="checkbox"/> Graphics package | <input type="checkbox"/> Black polycarbonate removable locking security cover |

*Additional options available on the website and price list.

MODEL	DIMENSIONS (Includes End Panels)
<input type="checkbox"/> VRSS3678S	36 x 33 x 78 (in) 914 x 838 x 1981 (mm)
<input type="checkbox"/> VRSS4878S	47.25 x 33 x 78 (in) 1200 x 838 x 1981 (mm)
<input type="checkbox"/> VRSS6078S	59.25 x 33x 78 (in) 1505 x 838 x 1981 (mm)
<input type="checkbox"/> VRSS7278S	71.25 x 33x 78 (in) 1810 x 838 x 1981 (mm)

STANDARD FEATURES

Model Features

- Black interior including shelves
- Stainless steel display deck
- Top LED light for maximum merchandising appeal and long life
- Black powder coated base frame
- Tempered glass ends
- Choice of standard laminates
- Black trim
- Adjustable leg levelers
- Energy saving night curtain
- Condensate evaporator pan (self-contained only)
- Matches profile of VHSS & VNSS models

Refrigeration

- R449a refrigerant
- Electronic temperature control maintains 38°-40°F (3.3°-4.4°C) Note: Case temperatures will vary if the air curtain is disrupted.
- Digital thermometer
- Clear coil on demand defrost
- Coated evaporator coil
- Universal breathe (Front air in with front or rear air out) (Rear air in and out optional)

Shelving

- Four tiers of adjustable black metal shelves with black price tag molding. Shelves can be flat or slanted downwards at 10°.

Lighting

- 3500K LED top light

Agency Approvals

- UL, C-UL and UL Sanitation listed to NSF-7, Type II conditions
- DOE 2017 compliant



WARRANTY*
One year Parts and Labor
2nd thru 5th year part only
service compressor
(U.S.A. and Canada)

Note: Information is subject to change at any time. Visit www.federalind.com for the most current specs.

AIA #

VISION SERIES - Square End Self-Serve Refrigerated Merchandiser - 78"

SIS #

Product Specifications

Intended Environment: Type II (Self Contained and Remote) - Designed to operate in maximum ambient conditions of 80°F (24°C) and 55% relative humidity.

Zone	Intended Product To Be Displayed	Avg Prod Temp °F/°C
All	Packaged Refrigerated Products	38°F / [3.3°C]

DIMENSION: xx"/(mm)

DIMENSION TOLERANCE +/- 0.25 (6.4)

SYMBOL KEY:

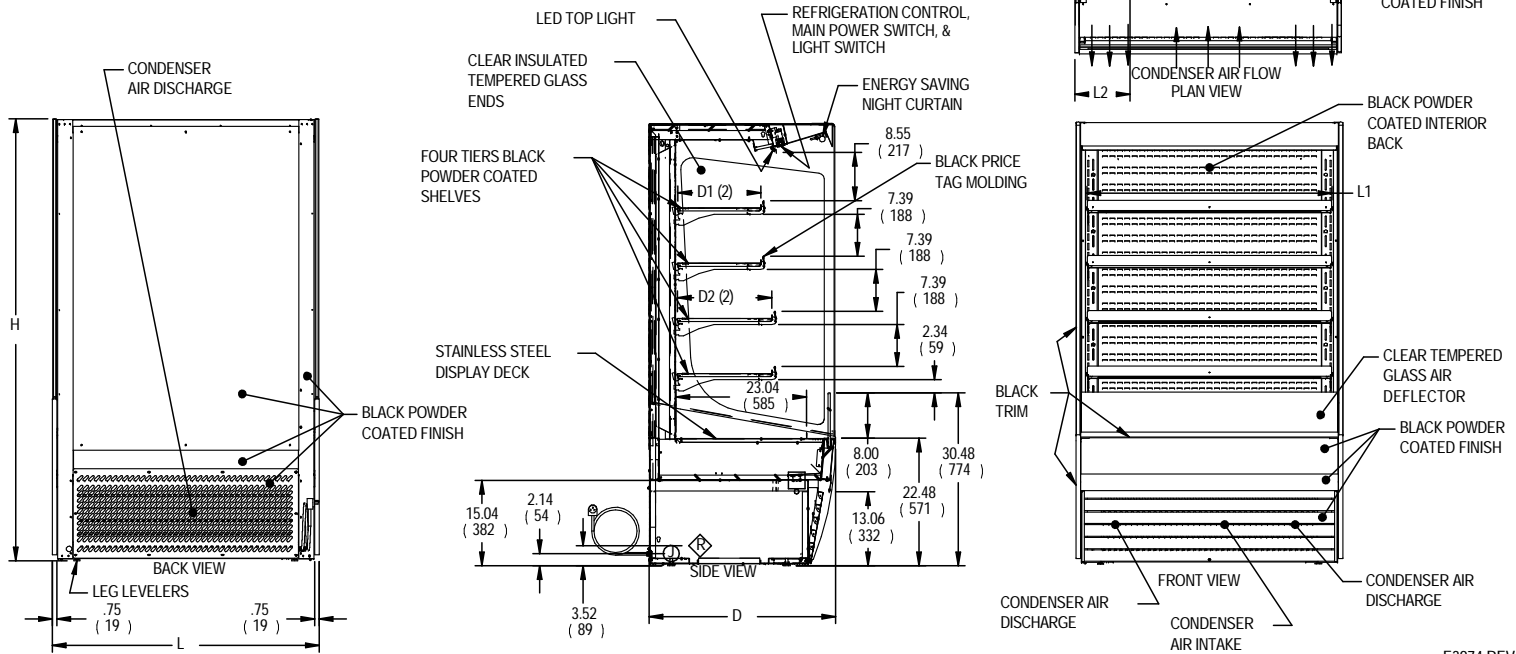
Ⓝ ELECTRICAL JUNCTION BOX
(SUPPLIED W/6' LEADS OR POWER CORD)

□ TUB DRAIN LOCATION

Ⓡ REMOTE REFRIGERATION
LINE CONNECTION

NOTE:

NO CLEARANCE NEEDED BEHIND UNIT FOR CONDENSER AIR VENTILATION, IF UNIT IS PUSHED UP AGAINST A WALL IT BECOMES FRONT CONDENSER AIR INTAKE AND DISCHARGE. CASES CAN BE PLACED IN LINE UPS WITH OUT ALTERNATE VENTILATION SETUPS



E3974 REV A

											SELF CONTAINED							REMOTE						
MODEL	DIMENSIONS			TUB DRAIN	SHELVING			INTERIOR VOLUME CU FT	ELECTRICAL	STANDARD CONNECTION CORD & PLUG			REFRIG	C.U . HP	CONDENSATE REMOVAL	SHIP WT	PERMANENT CONNECT		REFRIG	BTU'S @ + 20°	SHIP WT			
	L	D	H	L2	# OF TIERS	L1	D1			D2	2 WIRE + GROUND	AMPS				MAX FUSE	NEMA CORD &	LBS			AMPS	MAX FUSE	LBS	
	in	in	in	in		in	in		in	KILO														KILO
	mm	mm	mm	mm		mm	mm		mm	mm														mm
VRSS3678S	36	33	78	6.74	4	32.25	14.634	16.634	19.47	120/60/1	12.7	20	NEMA 5-20P	R449A	3/4	INTEGRATED PAN	740	2.5	15	R449A	6,720	695		
	914	838	1981	171		819	372	423									336					315		
VRSS4878S	47.25	33	78	13.49	4	43.25	14.634	16.634	25.74	208-240/60/1	12.5	20	NEMA 6-20P	R449A	1	INTEGRATED PAN	820	3.0	15	R449A	9,580	775		
	1200	838	1981	343		1099	372	423									372					351		
VRSS6078S	59.25	33	78	14.12	4	55.25	14.634	16.634	32.58	208-240/60/1	13.5	20	NEMA 6-20P	R449A	1-1/4	INTEGRATED PAN	1030	3.5	15	R449A	11,200	985		
	1505	838	1981	359		1403	372	423									467					447		
VRSS7278S	71.25	33	78	20.12	4	67.25	14.634	16.634	39.42	208-240/60/1	13.7	20	NEMA 6-20P	R449A	1-1/4	INTEGRATED PAN	1080	3.5	15	R449A	12,300	1040		
	1810	838	1981	511		1708	372	423									490					472		

- Due to continuing engineering improvements, specifications are subject to change without notice
- Case temperature will vary if the air curtain is disrupted.



FEDERAL INDUSTRIES

A Standex Company

215 Federal Avenue Belleville, Wisconsin 53508-9201

Phone: 800-356-4206

Fax: 608-424-3234

Email: Geninfo@Federalind.com

Website: Federalind.com