

Prepline PWC-1572 15" X 72" Stainless steel wall cabinet with flat top



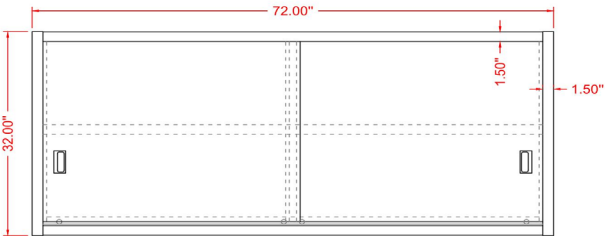
STANDARD FEATURES

- Stainless steel Wall Cabinet
- 16 gauge Type 430 stainless steel construction
- Enclosed with sliding doors
- 15"D x72"L x 32"H
- Flat top design
- Intermediate shelf
- Recessed door handle
- NSF Listed

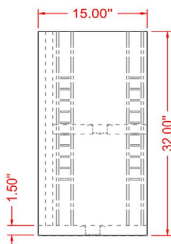
TECHNICAL DATA

Model	Length	Width	Height	Door Style	Gauge	Material	Installation Type	Shipping Weight	Shipping Dims
PWC-1572	72"	15"	32"	Sliding	16	SS430	Wall Mounted	138 lb.	73" x 31" x 6"

FRONT



SIDE



TOP

