



TOMASI

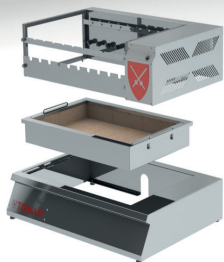


KBB-10C

Shish Kabob Charcoal Grill

STANDARD FEATURES

The Tomasi KBB-10C Shish Kabob Charcoal Grill is designed for versatility and performance. Countertop modular system allows for quick assembly. With reinforced mechanism, 10 rotating skewers, and a second skewer resting level it provides dependability and a smooth grilling experience. Featuring a refractory brick tray this grill operates on charcoal or wood to deliver a savory smoky flavor. Constructed of stainless steel for durability and easy maintenance.



Rotisserie System

Refractory Brick Tray

Stainless Steel Base

Rotating benefits:

- Effortless precision
- Even heat distribution
- Minimum labor required
- Flavor retention



Skyfood Equipment LLC
175 SW 7th Street, Ste 2416
Miami, FL 33130

Toll Free:
1-800-503-7534
sales@skyfood.us

www.skyfood.us

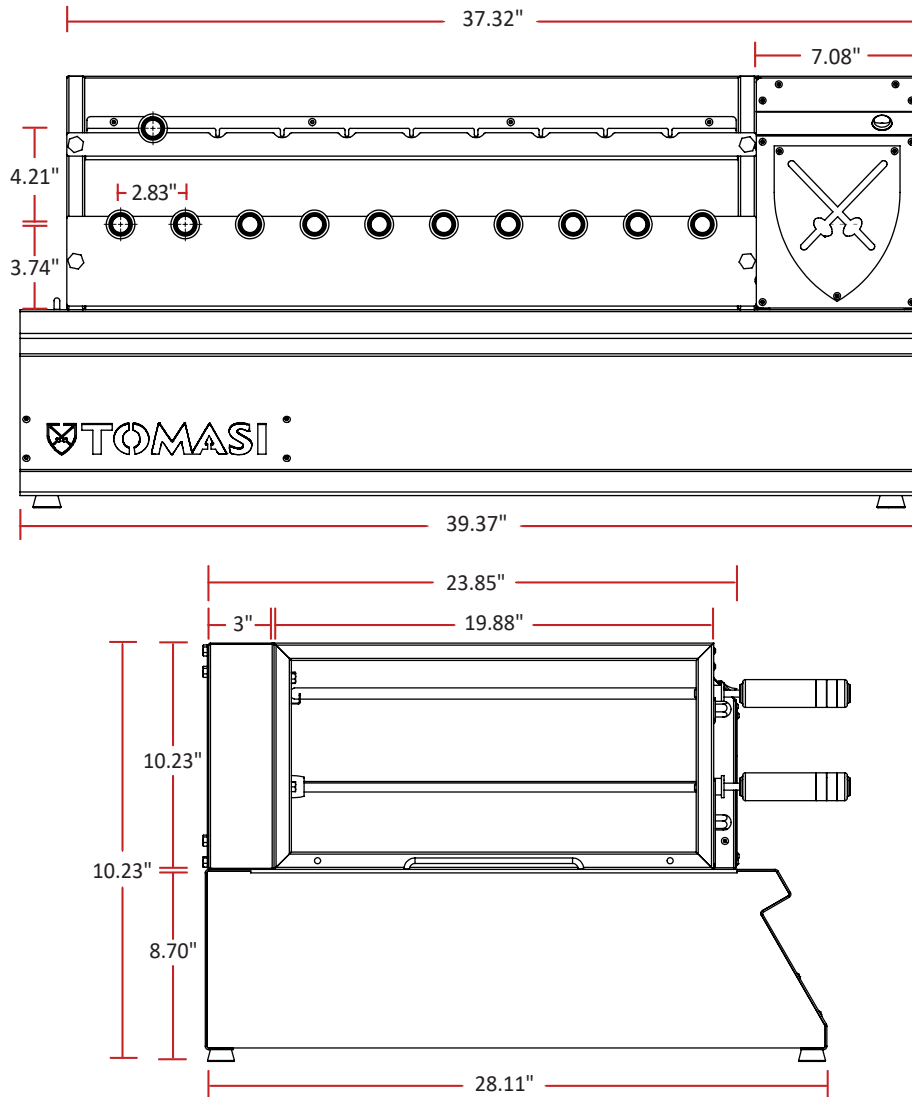
AQ AutoQuotes

beedash





DIMENSIONS



**WARRANTY 01 YEAR PARTS AND LABOR
VALID IN THE CONTINENTAL UNITED STATES.**



MADE IN BRAZIL

**HOOD
REQUIRED
FOR INDOORS
INSTALLATION**



**PLUG
NEMA 5-15P**

Item	Electrical	Power Rating	Dimensions (W x D x H)	Weight (Net x Ship)	N° of Skewers	PLUG
KBB-10C	115V / 60hz	12V	39.37" x 28.11" x 10.23"	200 lb x 250 lb	10	NEMA 5-15P



Skyfood Equipment LLC
175 SW 7th Street, Ste 2416
Miami, FL 33130

Toll Free:
1-800-503-7534
sales@skyfood.us

www.skyfood.us

