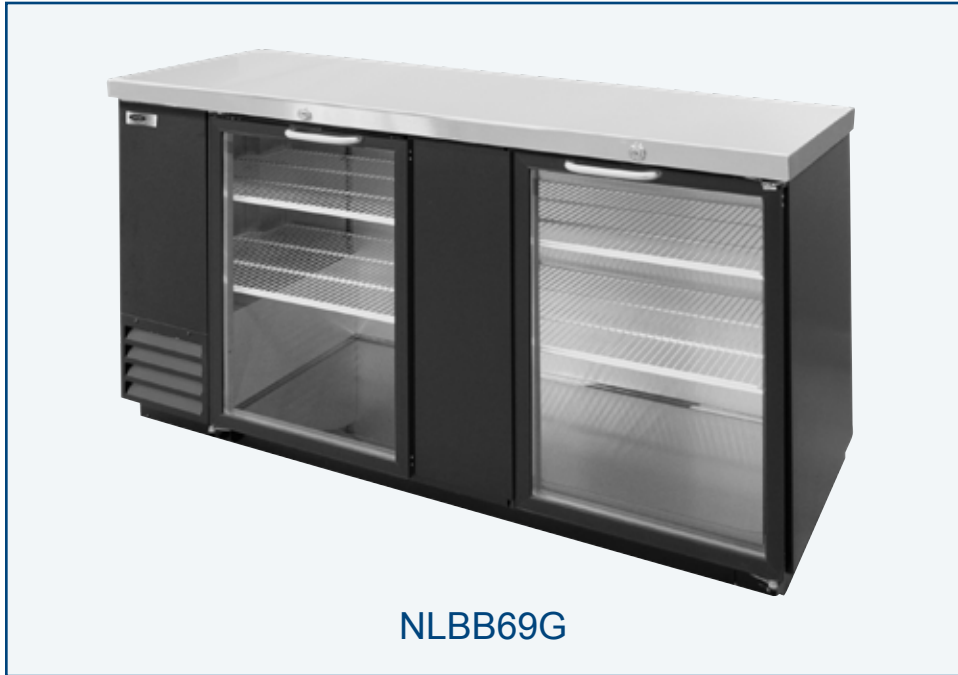




NOR-LAKE, INCORPORATED
727 Second Street
Hudson, Wisconsin 54016

800-955-5253
715-386-2323
866-961-5253 Parts
800-388-5253 Service
715-386-6149 FAX
www.norlake.com

ADVANTEDGE™ GLASS DOOR BACK BAR REFRIGERATORS



NLBB69G

PROJECT:

ITEM NUMBER:

MODEL NUMBER:

SPECIFICATIONS FOR: NLBB59G, NLBB69G, NLBB79G, NLBB95G

- **Finish:** Heavy duty stainless steel top and black exterior front, sides and back. Galvanized steel interior walls and stainless steel floor.
- **Insulation:** Foamed-in-place 1-1/2" CFC-free polyurethane insulation.
- **Hardware:** Glass doors with locks, magnetic door gaskets, plastic breaker strips around door openings to limit the formation of any condensation. Two adjustable shelves per door section standard. Interior LED light.
- **Electrical:** 115 volt, 60 Hz, 1 phase with cord and NEMA 5-15P plug
- **Refrigeration:** Self-contained forced air R290 capillary tube refrigeration system. Temperature range from +34°F to +38°F. Adjustable temperature control.
- **Approvals:** ETL Sanitation listed, UL and C-UL Safety listed, approved to NSF standard for packaged food products **

STANDARD FEATURES

- Adjustable temperature control
- Black front, sides and back exterior
- Two adjustable shelves per door section
- Free flowing air system at all times to ensure uniformly cooled products
- LED interior light
- Slide out condensing unit
- Temperature range: +34°F to +38°F
- ETL Sanitation listed, UL and C-UL Safety listed, approved to NSF standard for packaged food products **
- Warranties: 3 year parts & labor, 5 year compressor

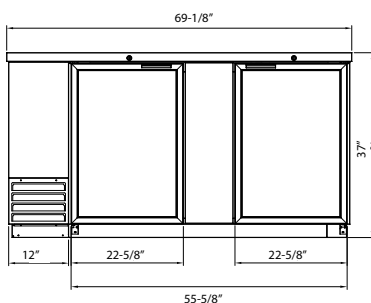
OPTIONAL FEATURES*

- 4" plate casters
- Floor rack(s)
- Shelves with product guides

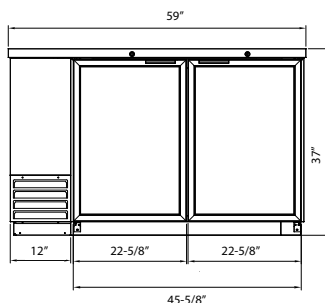
* Most options are available two weeks from receipt of order. Please contact us for specific questions.

**C-UL is Underwriters Laboratories Safety Certification Mark which indicates that UL has tested the equipment to applicable CSA Standards.

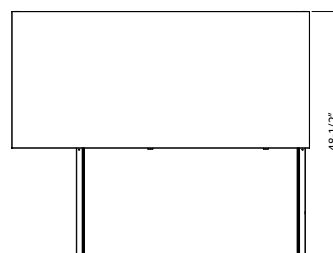
**UL Sanitation is Underwriters Laboratories Sanitation Mark which indicates that UL has tested the equipment to applicable NSF Standards.



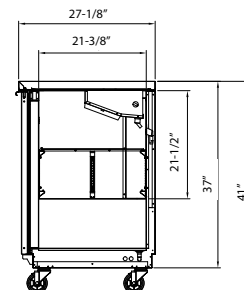
FRONT
NLBB69G



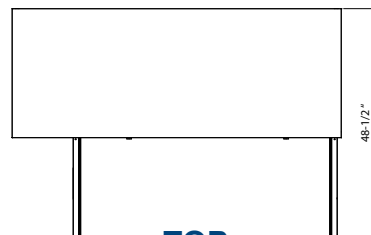
FRONT
NLBB59G



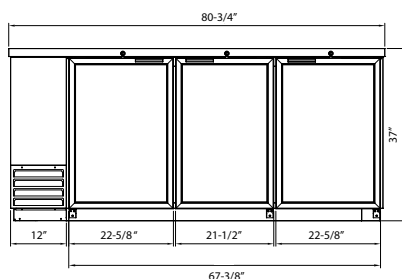
TOP
NLBB59G



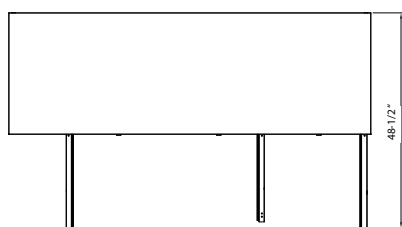
SIDE
ALL MODELS



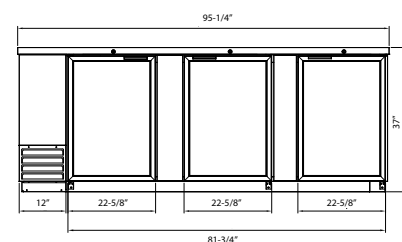
TOP
NLBB69G



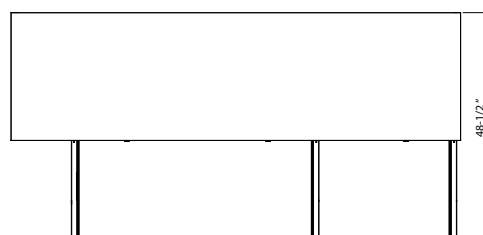
FRONT
NLBB79G



TOP
NLBB79G



FRONT
NLBB95G



TOP
NLBB95G

SPECIFICATIONS

Models	NLBB59G	NLBB69G	NLBB79G	NLBB95G
Crated Weight (lbs) (kg)	289 (131)	320 (145)	450 (204)	490 (222)
Crated Height (in) (cm)	43-1/2 (110)	43-1/2 (110)	43-1/2 (110)	43-1/2 (110)
Crated Width (in) (cm)	61-1/2 (156)	71-1/4 (181)	82-5/8 (210)	97-5/8 (248)
Crated Depth (in) (cm)	30 (76)	30 (76)	30 (76)	30 (76)
Interior Height (in) (cm)	32 (81)	32 (81)	32 (81)	32 (81)
Interior Width (in) (cm)	54-3/4 (139)	64-3/4 (165)	76-1/2 (194)	91 (231)
Interior Depth (in) (cm)	21-1/2 (55)	21-1/2 (55)	21-1/2 (55)	21-1/2 (55)
Overall Height (in) (cm)	37 (94)	37 (94)	37 (94)	37 (94)
Overall Width (in) (cm)	59 (150)	69-1/8 (176)	80-3/4 (205)	95-1/4 (242)
Overall Depth (in) (cm)	29-5/8 (75)	29-5/8 (75)	29-5/8 (75)	29-5/8 (75)
Gross Cubage (CuFt) (L)	19.4 (549)	23.4 (663)	27.9 (790)	33.6 (951)
Number of Shelves	4	4	6	6
Shelf Area (SqFt) (Sqm)	14.1 (1.31)	16.9 (1.57)	19.8 (1.84)	22.6 (2.1)
Condensing Unit Size	3/8 HP	3/8 HP	3/8 HP	3/8 HP
Refrigerant	R290	R290	R290	R290
Electrical Characteristics	115/60/1	115/60/1	115/60/1	115/60/1
Cord and Plug Furnished	Yes	Yes	Yes	Yes
NEMA Plug Configuration	5-15P	5-15P	5-15P	5-15P
Total Amp Draw	3.5	3.5	3.5	3.5
12 oz. Can Capacity	1084	1299	1566	1875
12 oz. Bottle Capacity	498	594	714	858

Specifications subject to change without notice.



Standex
Food Service Equipment Group

Revision Date: 1/19
Part Number: 143583