



NOR-LAKE, INCORPORATED
727 Second Street
Hudson, Wisconsin 54016

800-955-5253
715-386-2323
866-961-5253 Parts
800-388-5253 Service
715-386-6149 FAX
www.norlake.com

NOVA™ SLIDE GLASS DOOR REFRIGERATOR MERCHANDISERS

SLIDE GLASS DOOR MERCHANDISERS



NLGRP48-SL



NLGRP74-SL

PROJECT:

ITEM NUMBER:

MODEL NUMBER:

SPECIFICATIONS FOR: NLGRP48-SL, NLGRP74-SL

- **Finish:** 24 gauge painted textured galvanized steel interior and exterior. Black or white exterior finish. Standard white interior finish with stainless steel floor
- **Insulation:** 1-3/4" thick state-of-the-art, foamed-in-place "zero ODP" polyurethane insulation
- **Hardware:** Interior LED lighting with switch, interior hanging thermometer, top backlit graphic panel (standard panel is blank without graphics), adjustable legs for leveling, four adjustable heavy-duty epoxy coated shelves per door - adjustable in 1/2" increments on pilasters
- **Doors:** Auto-close, triple pane, safety glass doors, contemporary style black door frame with anti-microbial handles. On NLGRP74 models, left door slides to middle, middle and right door slide to left.
- **Electrical:** 115 volt, 60 Hz, 1 phase with cord and plug
- **Refrigeration** Self-contained bottom mount refrigeration system designed for optimum energy efficiency and low noise. Top mounted, low profile interior evaporator housing for increased storage space, energy-free condensate removal. Refrigeration system is accessible for ease of service and regular preventative maintenance. Refrigerant: R290. Temperature range: +34° to +41°F. Electronic temperature control.
- **Approvals:** UL/C-UL Safety, UL Sanitation, and NRCAN listed **

STANDARD FEATURES

- 24 gauge painted textured galvanized steel interior and exterior
- 2-1/2" adjustable legs for leveling
- Anti-microbial finish on door handles
- Auto-close, triple pane, safety glass doors
- Contemporary style black door frame
- Energy-free condensate removal
- Four adjustable heavy-duty epoxy coated shelves per door
- Interior hanging thermometer
- Interior LED lighting with light switch
- Refrigerant: R290
- Self-contained bottom mount refrigeration system
- Top backlit graphic panel (standard panel is blank without graphics)
- Temperature range: +34° to +41°F
- Top mounted, low profile interior evaporator housing for increased storage space
- White interior finish with stainless steel floor
- Warranties: 3 year parts and labor, 5 year compressor
- Approvals: UL/C-UL Safety, UL Sanitation, and NRCAN

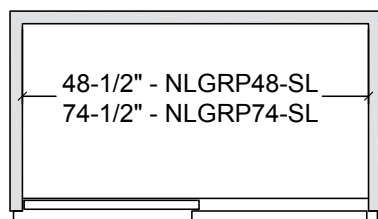
OPTIONAL FEATURES*

- Additional shelving
- Black or white exterior finish
- Casters

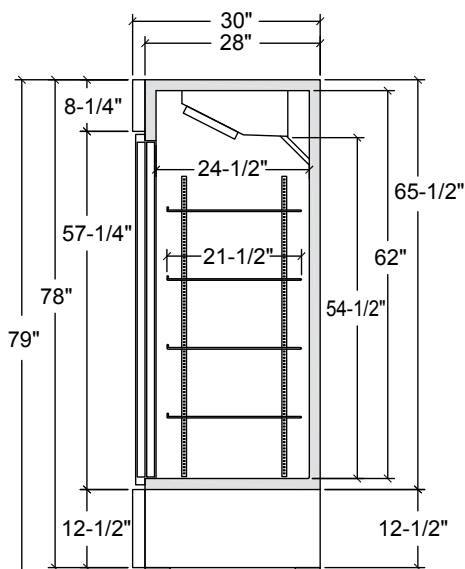
* Most options are available two weeks from receipt of order. Please contact us for specific questions.

** C-UL is Underwriters Laboratories Safety Certification Mark which indicates that UL has tested the equipment to applicable CSA Standards.

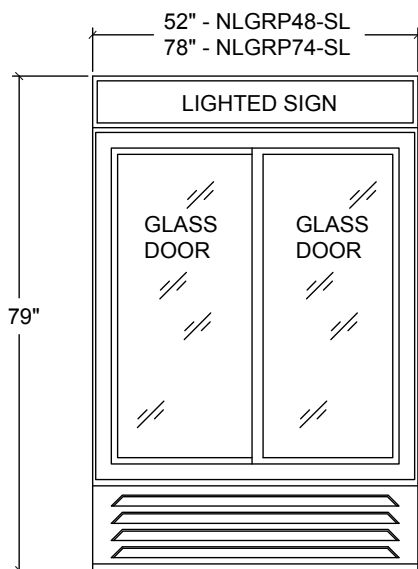
** UL Sanitation is Underwriters Laboratories Sanitation Mark which indicates that UL has tested the equipment to applicable NSF Standards.



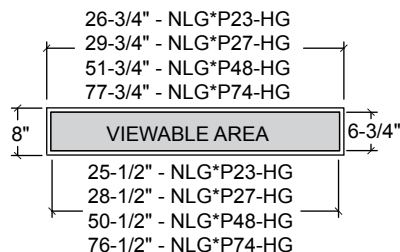
TOP VIEW



SIDE VIEW



FRONT VIEW



GRAPHIC PANEL
DIMENSIONS

SPECIFICATIONS

Models	NLGRP48-SL	NLGRP74-SL
Crated Weight (lbs) (kg)	530 (239)	715 (322)
Crated Height (in) (cm)	86 (215)	86 (215)
Crated Width (in) (cm)	60 (150)	88 (220)
Crated Depth (in) (cm)	42 (105)	42 (105)
Interior Height (in) (cm)	54-1/2 (138)	54-1/2 (138)
Interior Width (in) (cm)	48-1/2 (123)	74-1/2 (189)
Interior Depth (in) (cm)	24-1/2 (62)	24-1/2 (62)
Overall Height (in) (cm)	79 (201)	79 (201)
Overall Width (in) (cm)	52 (132)	78 (198)
Overall Depth (in) (cm)	30 (76)	30 (76)
Gross Cubage (ft³) (L)	45.7 (1293)	70.2 (1987)
Number of Shelves	8	12
Shelf Size (in)	23-1/2 x 21-1/2	23-1/2 x 21-1/2 (outer doors) 25-1/2 x 21-1/2 (middle door)
Condensing Unit Size	1/3 HP	1/2 HP
Refrigerant	R290	R290
Electrical Characteristics	115/60/1	115/60/1
Cord and Plug Furnished	Yes	Yes
Maximum Fuse Size	15 Amps	15 Amps
Nema Plug Configuration	5-15P	5-15P
Total Amp Draw	6.8	7.0

Specifications subject to change without notice.



Revision Date: 9/19
Part Number: 152102